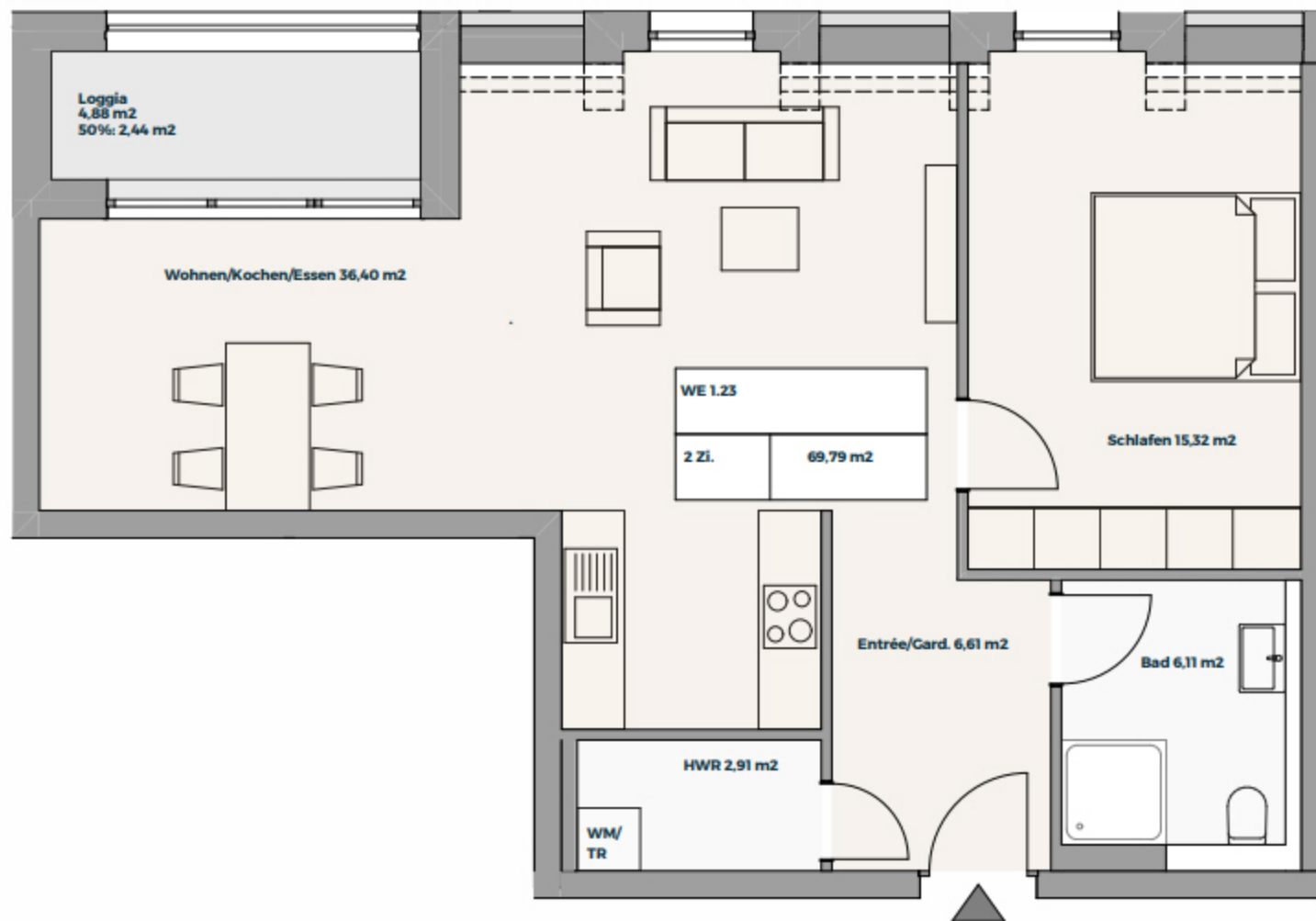


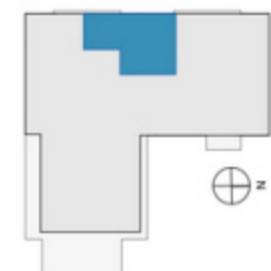
# 3. Obergeschoss

## WE 1.23 2-Zimmer



■ Entrée / Garderobe	6,61 m <sup>2</sup>
■ Bad	6,11 m <sup>2</sup>
■ HWR	2,91 m <sup>2</sup>
■ Schlafen	15,32 m <sup>2</sup>
■ Wohnen / Kochen / Essen	36,40 m <sup>2</sup>
■ Loggia 50 % (4,88 m <sup>2</sup> )	2,44 m <sup>2</sup>

**69,79 m<sup>2</sup>**



Hinweis:  
Möblierung beispielhaft.  
Anschlüsse bedingt anpassbar.