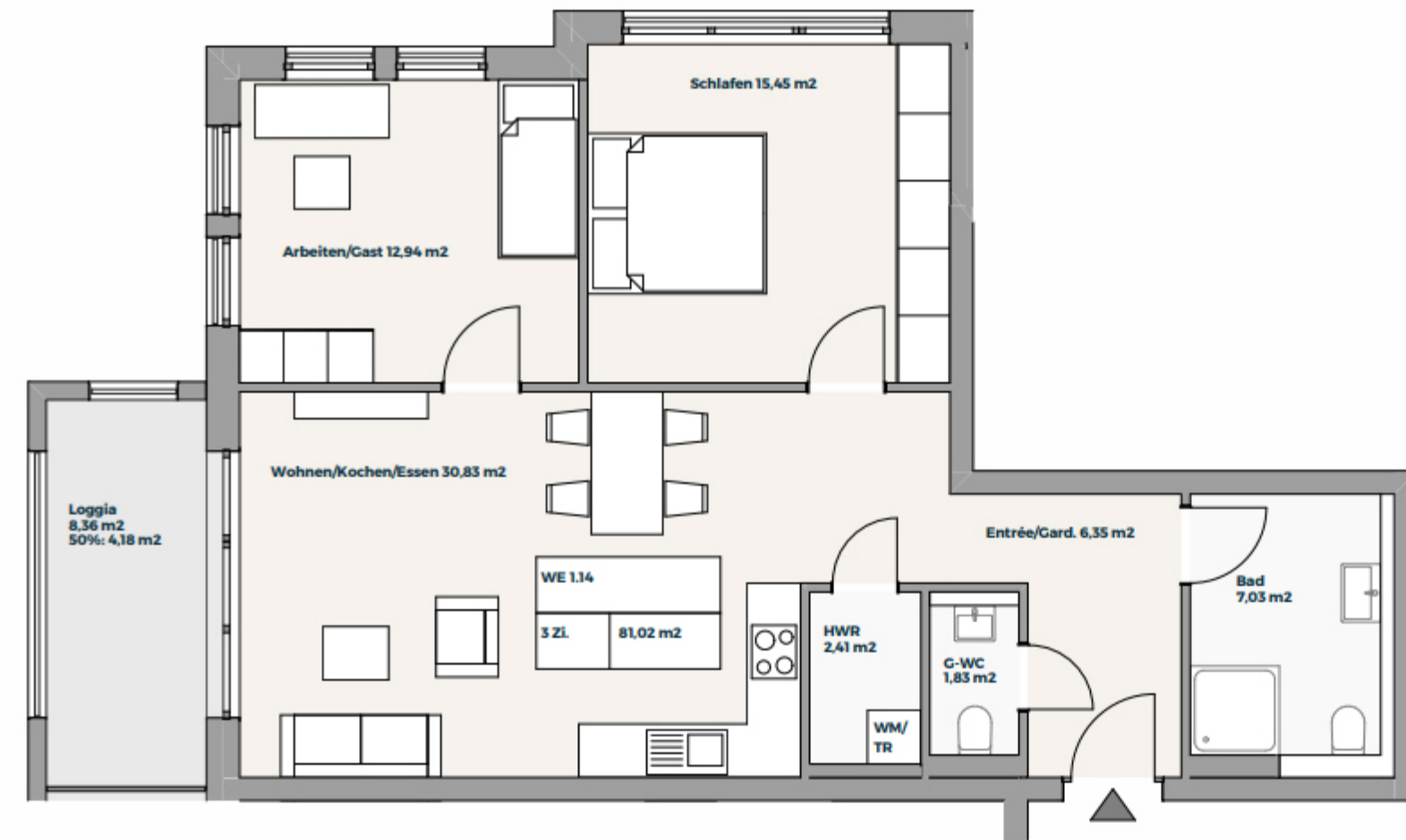
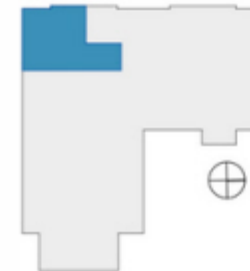


## 2. Obergeschoss

### WE 1.14 3-Zimmer



|                                      |                      |
|--------------------------------------|----------------------|
| ■ Entrée / Garderobe                 | 6,35 m <sup>2</sup>  |
| ■ Wohnen / Kochen / Essen            | 30,83 m <sup>2</sup> |
| ■ Gäste-WC                           | 1,83 m <sup>2</sup>  |
| ■ Arbeiten / Gast                    | 12,94 m <sup>2</sup> |
| ■ Schlafen                           | 15,45 m <sup>2</sup> |
| ■ HWR                                | 2,41 m <sup>2</sup>  |
| ■ Bad                                | 7,03 m <sup>2</sup>  |
| ■ Loggia 50 % (8,36 m <sup>2</sup> ) | 4,18 m <sup>2</sup>  |
| <hr/>                                |                      |
|                                      | 81,02 m <sup>2</sup> |



Hinweis:  
Möblierung beispielhaft.  
Anschlüsse bedingt anpassbar.