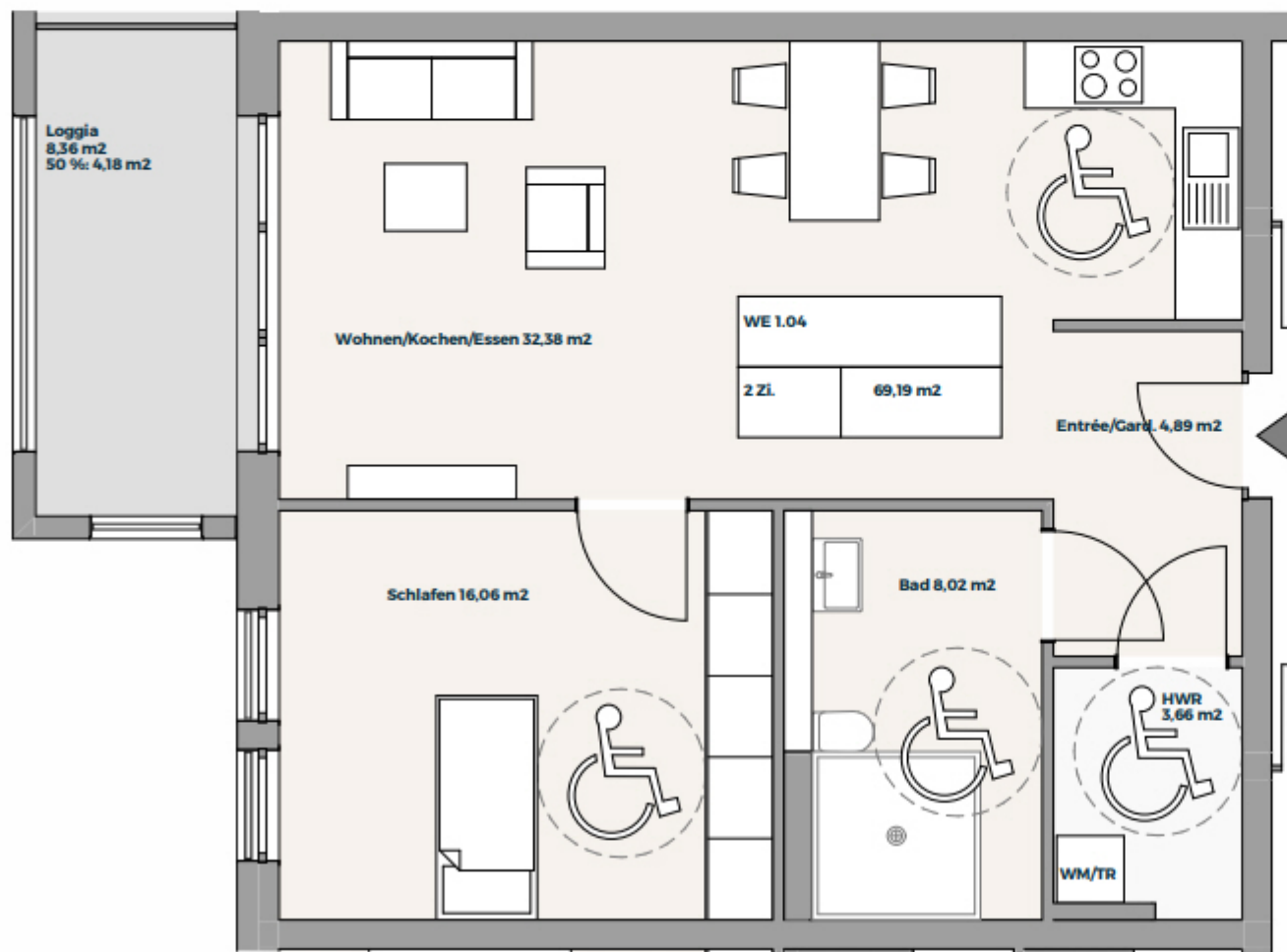


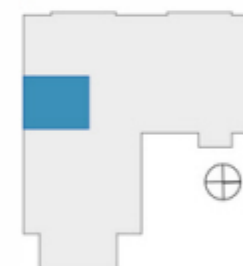
# 1. Obergeschoss

## WE 1.04 2-Zimmer



■ Entrée / Garderobe	4,89 m <sup>2</sup>
■ Bad	8,02 m <sup>2</sup>
■ HWR	3,66 m <sup>2</sup>
■ Schlafen	16,06 m <sup>2</sup>
■ Wohnen / Kochen / Essen	32,38 m <sup>2</sup>
■ Loggia 50 % (8,36 m <sup>2</sup> )	4,18 m <sup>2</sup>

**69,19 m<sup>2</sup>**



Hinweis:  
Möbliering beispielhaft.  
Anschlüsse bedingt anpassbar.